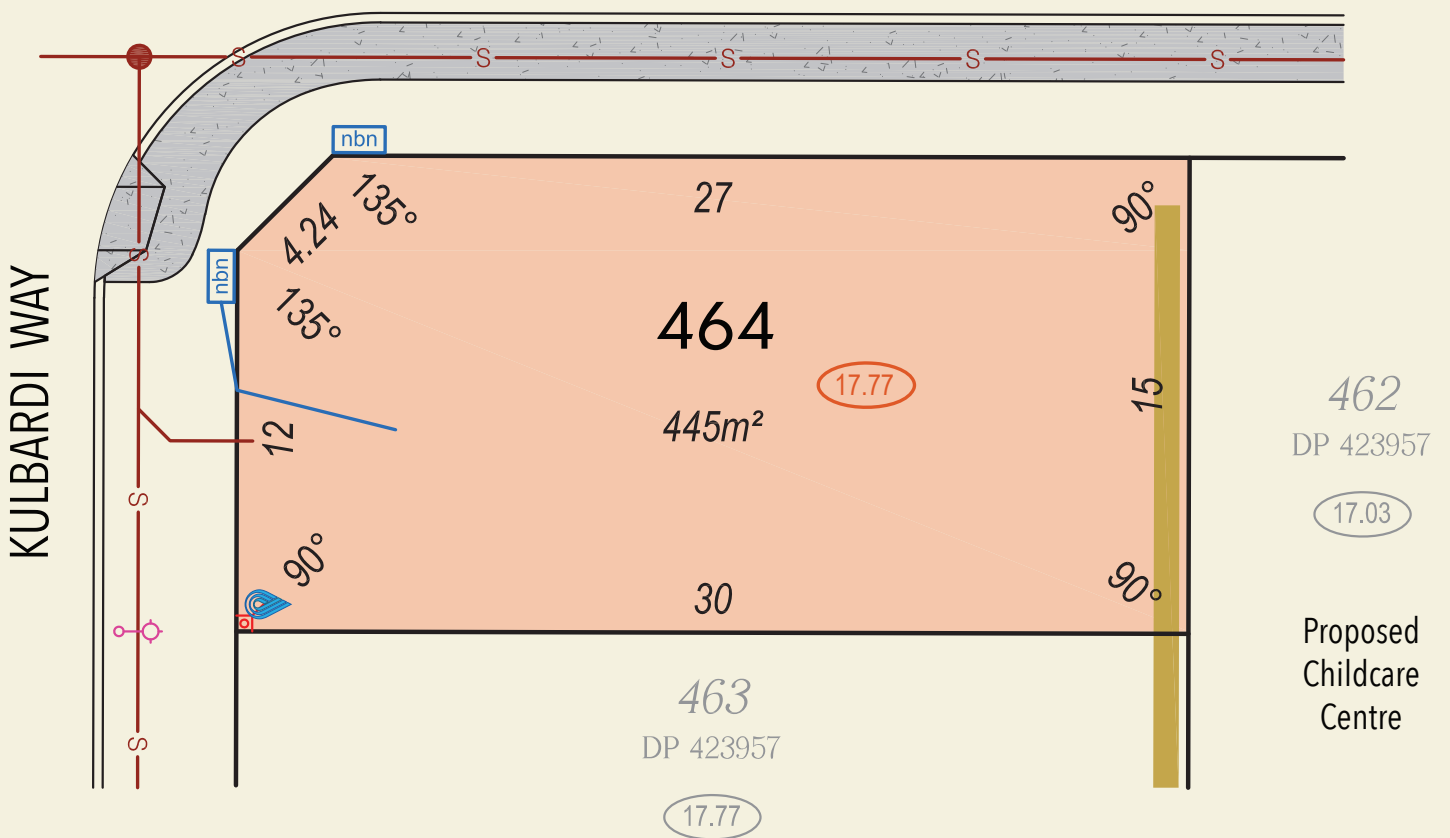




YAKKAN STREET



- | | | | | |
|---------------------------------|------------------------------------|------------------|-------------------------------|---------------------------|
| Footpath | NBN Pit / Connection | Street Sign | Bushfire Attack Levels | Quiet House Design |
| Limestone Retaining Wall | Western Power Housing Connection | Drainage Manhole | BAL - 12.5 | Package A |
| Pad Finished Level (16.66) | Water Connection | Hydrant | BAL - 19 | Package B |
| Access Restriction / Noise Wall | Sewer Housing Connection / Manhole | | BAL - 29 | |
| Light Pole | Stormwater Manhole / Pit | | | |

All Dimensions and Areas are subject to survey. The particulars on this brochure are supplied for identification purposes only and shall not be taken as a representation in any aspect on the part of the vendor or its agents. Authorities should be consulted when services are contained within lot boundaries as building restrictions may apply. All retaining walls, services and associated easements are shown exaggerated for legibility. All lots are subject to Local Development Plan 15/2021 which has been approved by the City of Swan. City of Swan Local Planning Policy POL-LP-11 / Residential Medium Density (RMD) standards apply to all lots. | DeNada Ref: 22539 Date 14/6/2022 | Plan by De Nada Surveys