



## Modena - Perth - Designer Plus

4 2 2 186 sqm

Facade name: Portico

### House Plan:



### LOT #421

Bennett Quarter

Address: Rodean Street, Bennett Springs, 6063



322 m<sup>2</sup>

House and land package price:

From **\$569,990\***

### About package:

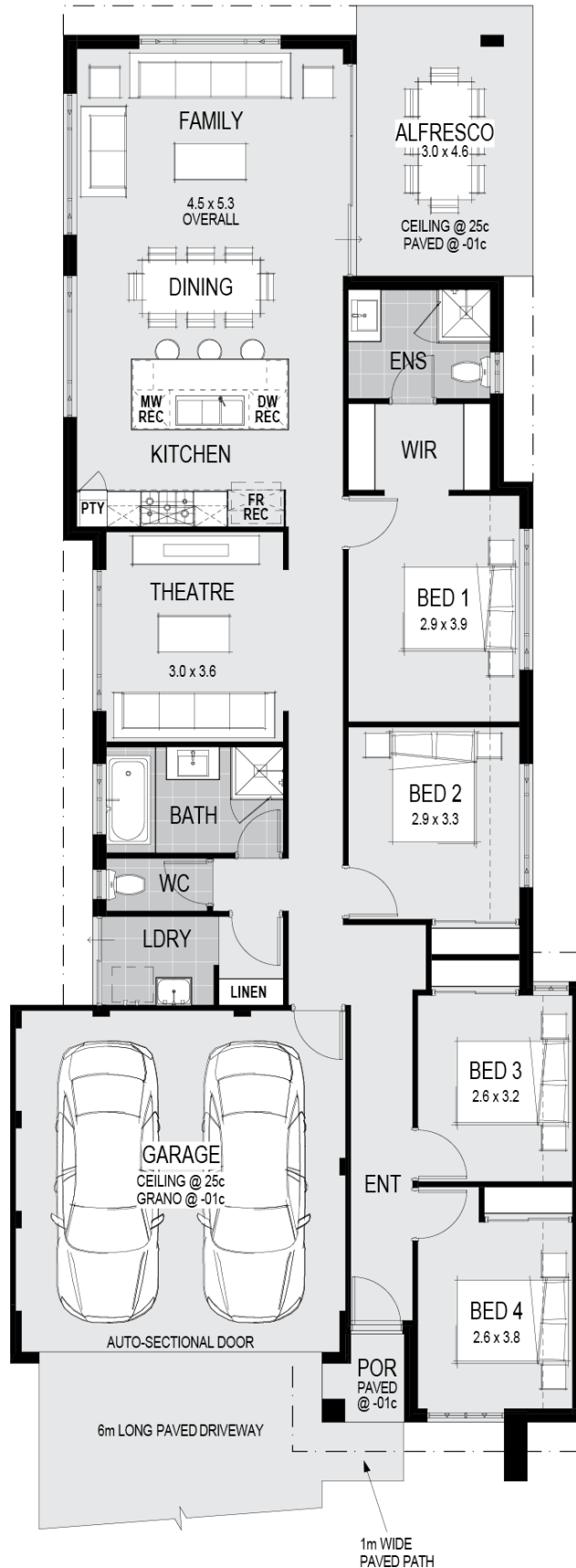
- \$30,000 DESIGNER KITCHEN
- Huge 1200mm Wide Island Bench
- Stone Benchtops
- European High Gloss Cabinetry
- European High Gloss Pantry
- Lift up overhead Cupboards
- Extensive Drawers
- Laminate Pantry
- 900mm Freestanding Stove
- Integrated Rangehood
- PLUS MUCH MORE
- Ford & Doonan Reverse Cycle Air Con
- Advanced LED Downlights Throughout
- Stone Benchtops Throughout
- 31c High ceilings
- Laundry Inset Trough and Cabinet
- Choice of Feature Front Elevation's
- 450 x 450 Porcelain Floor Tiles
- Loop Pile Carpet
- Blinds Throughout
- European Design Fittings & Fixtures
- Mirrored Robe Sliding Doors
- Lever Door Handles
- Double Lock Up Garage

### ENQUIRE NOW:

Shane Jovich • P: 0402122268 • E: shane.jovich@homegroup.com.au

### House Features:

- ✓ Daikin Reverse-Cycle Multi Zone Air-Con
- ✓ Stone Bench Tops Throughout
- ✓ 30 Year Structural Warranty
- ✓ High Ceilings to Living Areas
- ✓ LED Downlights Throughout
- ✓ 450x450 Porcelain Floor Tiles
- ✓ Loop Pile Carpet with Underlay
- ✓ Blinds Throughout
- ✓ Selection of Pavers
- ✓ European Style Fixtures & Fittings Throughout
- ✓ \$30,000 Designer Kitchen Package Including: Huge 1200 wide island bench, overhead cupboards, integrated rangehood, 900 wide oven gas cook top plus much more!
- ✓ Bonus 1200mm Front Entry Door with Electronic Smartlock



### ENQUIRE NOW:

Shane Jovich • P: 0402122268 • E: shane.jovich@homegroup.com.au